

# SAHCO

## COLLAGE-COLLECTION SIGNATURE – TREVIRA CS®

SAHCO is launching a new collection made of TREVIRA CS® with an unmistakable look. SIGNATURE is a strong mix of 9 contemporary upholstery, decoration and sheer articles perfect for sophisticated interior design. TREVIRA CS® means hard wearing, easy care as well as flameproof and forms the technical base of these novelties, which are at the same time classic and modern with trendy colours, to be found in the luxury hotels of the world. SIGNATURE shows perfectly how to create beautiful rooms with a clear language. It is not only what we recommend for stylish representative projects but also for private residential business and contemporary interiors: a charming collection featuring all the advantages of this high-quality polyester fibre.

### PRIMAVERA



The collection starts with a large-scale damask in a modern TREVIRA CS®-interpretation, a special Mouliné-yarn in a jacquard-technique with a small dot pattern in a delicate glossy satin. The elegant base in combination with the strong high-tech yarn in a classic design gives this decoration fabric its modern look and depth.

Art. no. 2424

7 col.

100%PES TREVIRA CS

148 cm wide ↔



### PRIMA



The coordinate to PRIMAVERA: irregular stripes in the same TREVIRA CS®-quality. The dots in vertical lines seem like pearls on a string. In combination with the glossy ply yarn the article is given a charming relief with a delicate structure. 7 colours as coordinate for article PRIMAVERA.

Art. no. 2425

7 col.

100%PES TREVIRA CS

148 cm wide ↔



# SAHCO

## PALOMA

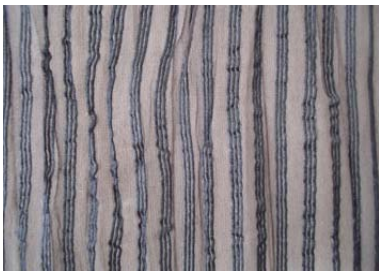


Art. no. 2426  
5 col.  
100%PES TREVIRA CS  
300 cm wide ↓



A very special TREVIRA CS®-organza: an ornament in fil-coupé–technique turns this room-high fabric into a very elegant sheer. The design itself is made of different weaves and natural structures. A very sophisticated and appealing fabric for seamless use.

## CONCETTO

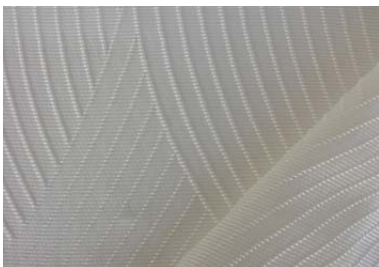


Art. no. 2427  
3 col.  
100%PES TREVIRA CS  
310 cm wide ↓



CONCETTO is also room-high with a delicate stripe. The TREVIRA CS® weave contains a structured filling weft yarn with the look of paper. Result is a very versatile sheer with a natural look.

## MELODIA



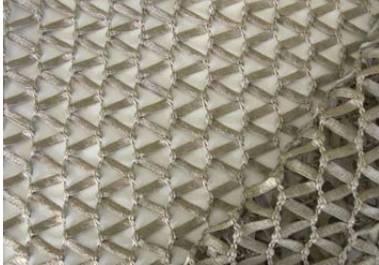
Art. no. 2428  
3 col.  
100%PES TREVIRA CS  
155 cm wide ↔



This structured semi-sheer has an especially „crisp“ feel. The graphic design floats in generous waves over the fabric with relief-like outlines caused by a special shrink yarn. The fabric has a modern look and is available in 3 colours, a very soft TREVIRA CS®-quality perfect for decoration.

# SAHCO

## XANDRINA



Art. no. 2429  
5 col.  
100%PES TREVIRA CS  
140 cm wide ↔



This leno cloth is a very unusual design in TREVIRA CS. Reminiscent of the very successful Ulf Moritz article VIKING, which is technically identical. Despite its unusual structure it is washable.

## BANDERA



Art. nr. 2430  
6 col.  
100%PES TREVIRA CS  
142 cm wide ↔

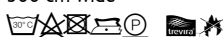


The intention was to create a sophisticated block stripe in a plain quality and an opaque decoration fabric. Very delicate wide warp stripes in a satin weave alternating with structured flamé-yarns in the weft. Result is a matte-glossy stripe with a very rich drape, very elegant and unusual for a TREVIRA CS® fabric. 6 attractive colours matching the entire collection.

## DOMANI reversible



Art. no. 2431  
3 col.  
100%PES TREVIRA CS  
300 cm wide ↔



A real innovation: the first double-sided and double-width TREVIRA CS®-fabric already with padding to be used as bedspread. The allover-design is embroidered and ready to be used for bedspreads or pillows. The quality is also suitable for upholstering beds and can be used from both sides with 2 different colours.

# SAHCO

## CATANIA



The only thing missing in the collection was a hard-wearing upholstery fabric, and now we have it. CATANIA is a shadow velvet in 100% TREVIRA CS®. An elegant slightly glossy velvet with an allover-design and 100.000 rubs (EN ISO 12947-02 n. Martindale). A typical specialty for SAHCO available in 5 matching colours.

Art. no. 2432

5 col.

100%PES TREVIRA CS

140 cm wide ↔



## MATCHING ARTICLES

## RIVOLI



With 22 colours and as attractive upholstery fabric RIVOLI is the perfect supplement to the SAHCO TREVIRA® CS-collection. The small graphic design in a diamond shaped chenille makes RIVOLI an allrounder. The „high and low“ effect comes from the voluminous chenille weft yarn causing a subtle matte-glossy look in the warp.

Art. no. 2164

22 col.

100%PES TREVIRA CS

140 cm wide ↔

